

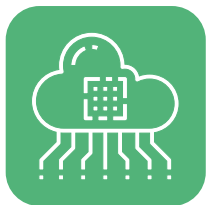


# Hecterra – a solution for agribusiness

It is an effective web application designed specifically for the agricultural sector. It monitors the field works based on the telematics data from Wialon, the GPS monitoring platform.

The solution delivers data on fields, crops, field operations as well as drivers and special vehicles to agronomists, dispatchers, and managers of agricultural enterprises.

## Functionality



### API for integrations with any enterprise software

Data transfer to accounting systems of all kinds

The development of solutions tailored to enterprise needs



### Fields and crops

Field import from the file or creation of fields right in the application

Crop rotation and crop catalog

Detailed operations history for each field



### Field cultivations

Cultivations search and approval

Calculation of the cultivated field areas and fuel consumption

Visual representation of overlaps and omissions



### Special vehicles and drivers

Using drivers, units, and trailers created in Wialon



### Reports

Easy reports generation by various parameters

Reports export in .csv and .xlsx formats



# Why use Hecterra?

- ✓ Specialized Wialon-based solution
- ✓ Full-featured API for all sorts of integrations
- ✓ Simple and user-friendly interface
- ✓ Special vehicles and drivers control
- ✓ Detailed reports on operations performed

